



Chittenden County  
**I-89 2050 Study**

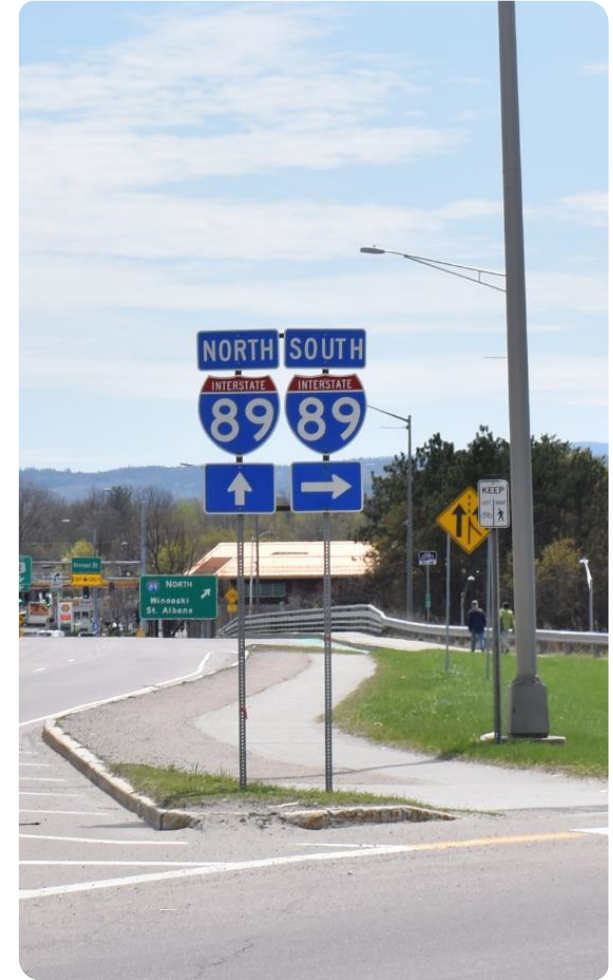
## Advisory Committee Meeting #1

June 21, 2019



# Agenda

1. Introductions
2. Public Comment
3. Review of Metropolitan Transportation Plan (MTP)
4. I-89 Project Overview
5. Review Advisory Committee & Technical Committee Roles & Membership
6. Review Project Scope, Schedule, and Current Tasks
7. Review Public Engagement Platform
8. Next Steps



## Metropolitan Transportation Plan (MTP)

- Region's principal long-term (2050) transportation planning document
- Evaluates system performance, identifies future needs, and sets regional transportation priorities
- Plan must be fiscally constrained
- Projects must be in the MTP to be included in the TIP (four-year list of upcoming transportation projects) to be eligible for federal funding. Some exceptions apply, including:
  - Emerging safety issues
  - Municipal bike and pedestrian grants
  - Stormwater projects



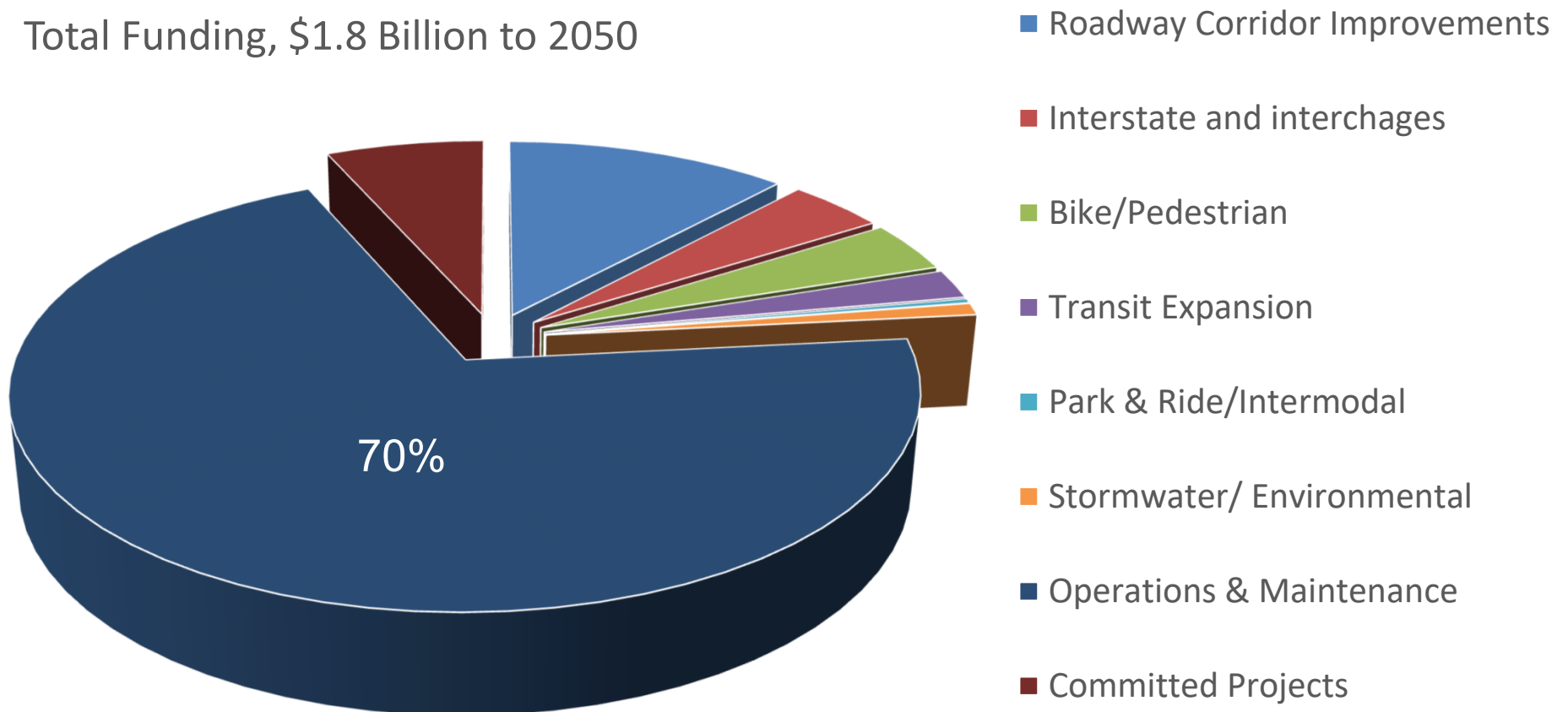
## MTP Approach

- Achieve ECOS Plan Goals:
  - Provide accessible, safe, efficient, interconnected, secure, equitable and sustainable mobility choices for our region's businesses, residents and visitors.
  - Encourage future growth in the Center, Metro, Enterprise, Suburban, and Village Planning Areas to maintain Vermont's historic settlement pattern and respect working and natural landscapes.
- Analyzed several scenarios to achieve best results
- Balance between:
  - Reducing congestion
  - Fixing high crash locations
  - Increasing livability by investing in areas planned for growth



# Financial Plan for a Fiscally Constrained MTP

Total Funding, \$1.8 Billion to 2050



## MTP Scenarios

- Major Scenarios & Sub-scenarios
  - 2015 & 2050 Base
  - Road Capacity Scenarios (2)
  - Connected and Autonomous Vehicles (2)
  - Transportation Demand Management (1)
  - Land Use (3)
- MTP Scenario
  - Includes best elements from the scenarios
  - Balanced, achievable and sustainable transportation plan

## Demographic Forecasts

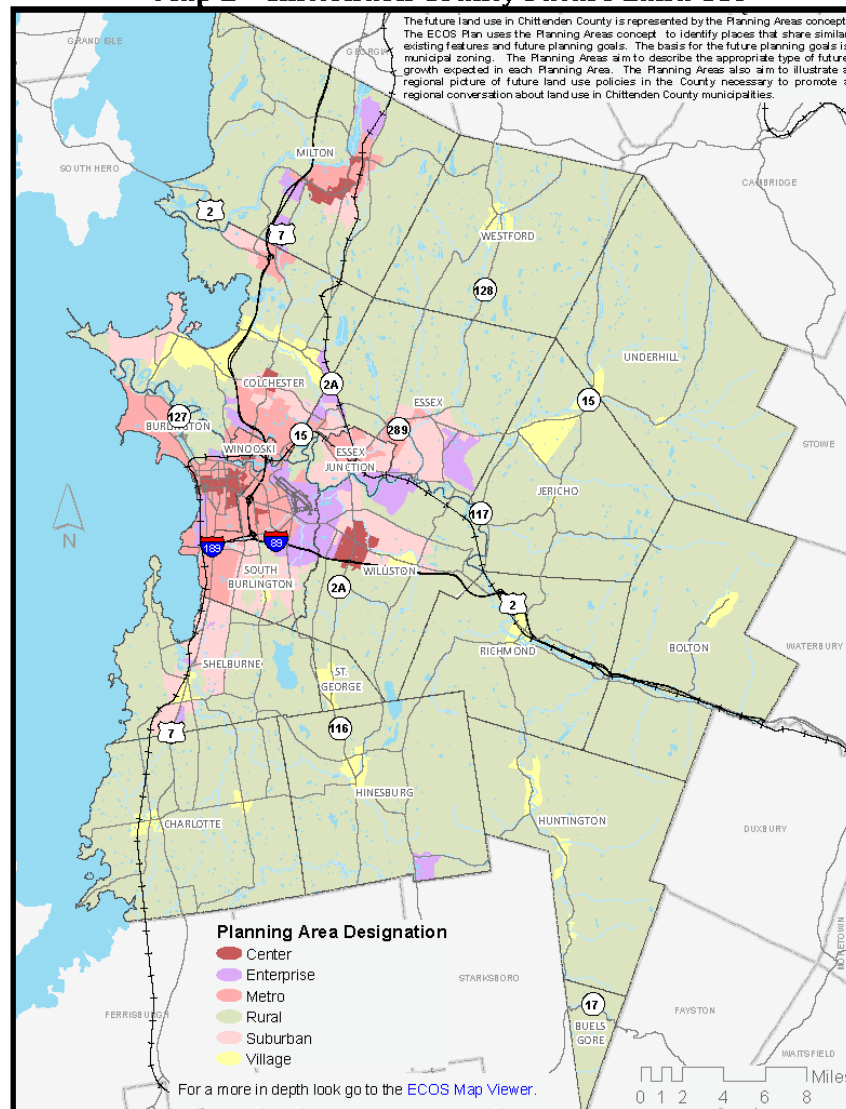
	2015	2050	2015 to 2050 % increase
Population	161,382	183,172	<b>14%</b>
Employment	135,511	182,688	<b>35%</b>
Household	63,498	79,151	<b>25%</b>



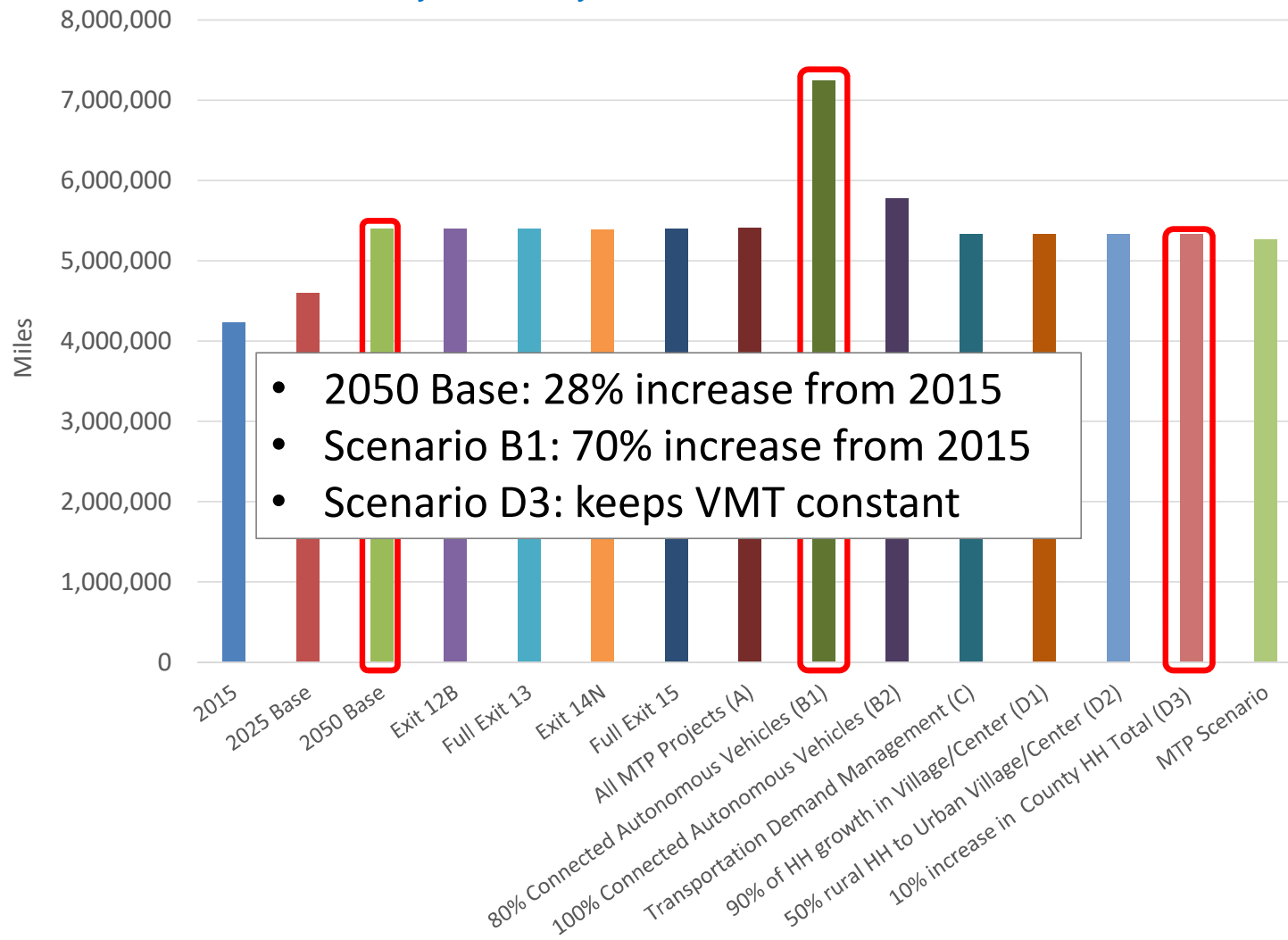
CCRPC Board Approved, March 2017



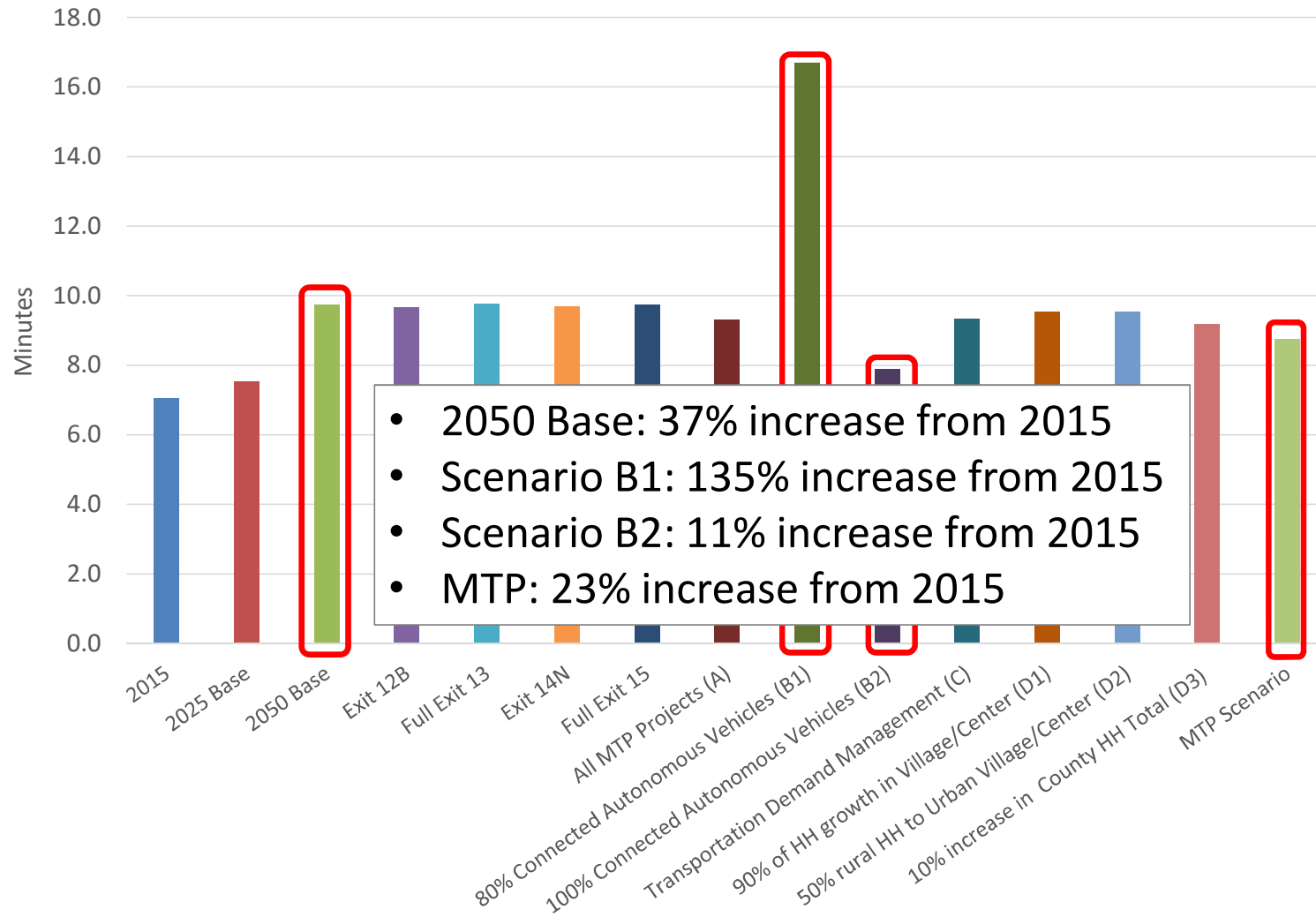
## Map 2 - Chittenden County Future Land Use



## Countywide Daily Vehicle Miles Traveled (VMT)

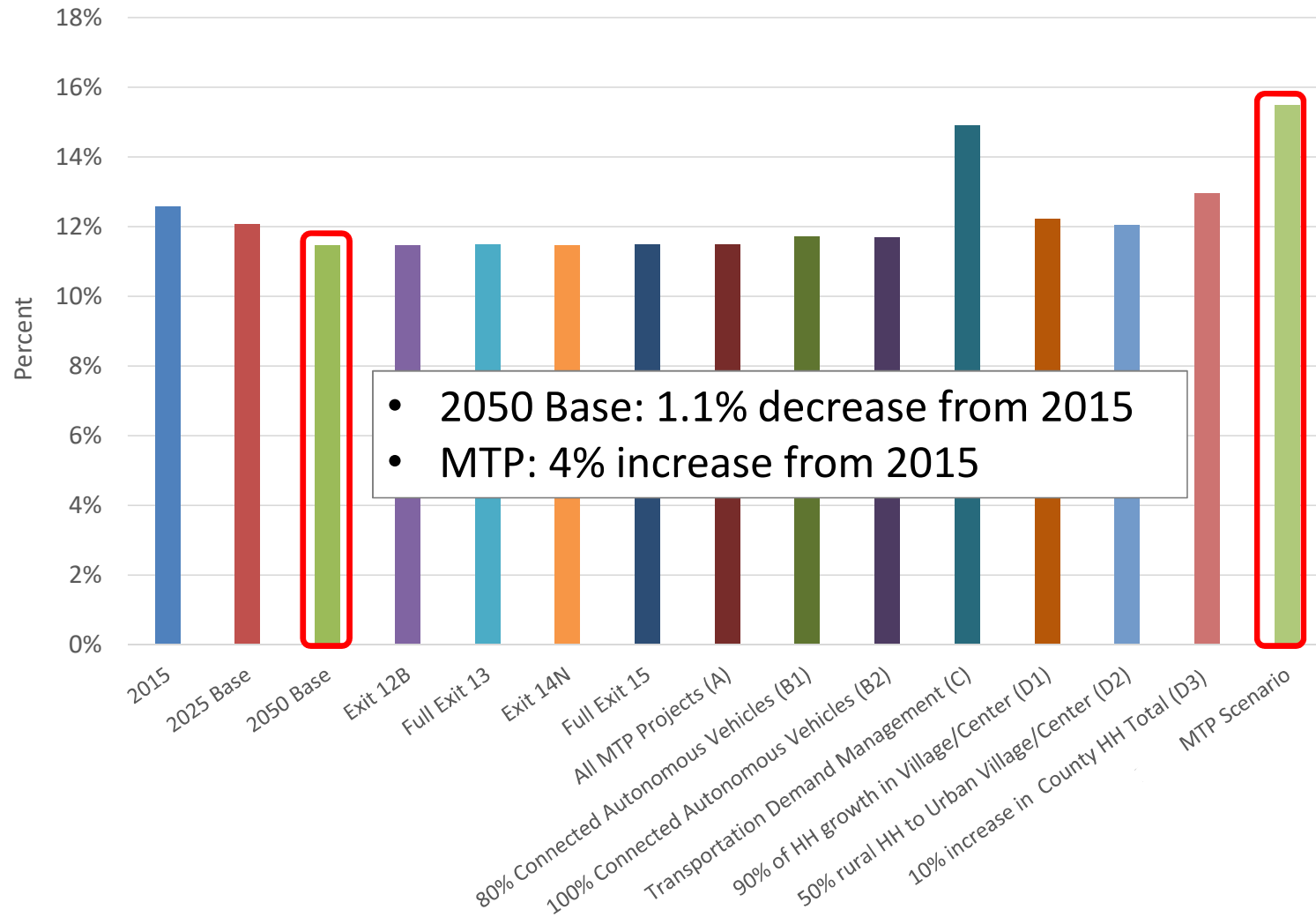


## Countywide Daily Delay per Capita



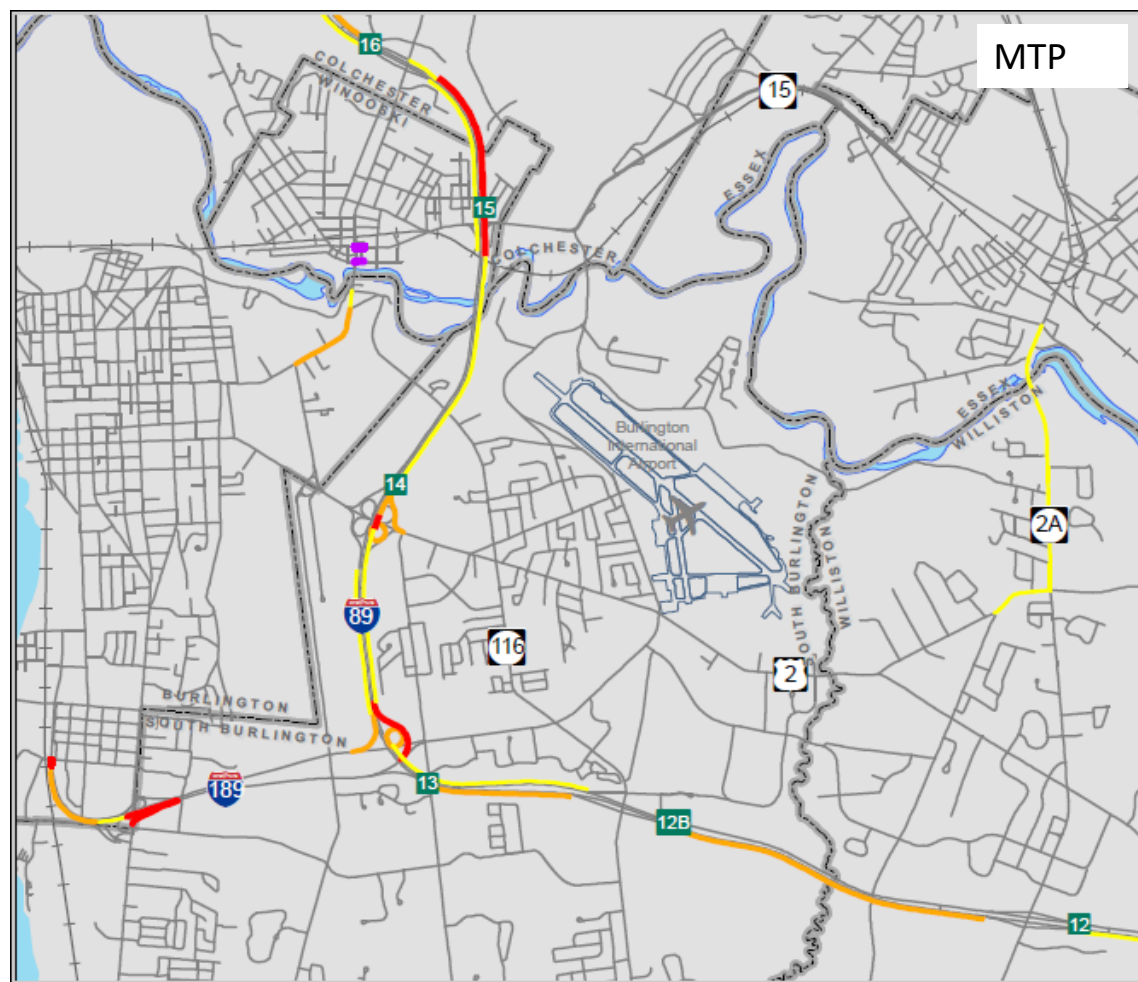


## Countywide Daily Transit, Walking & Biking Mode Split

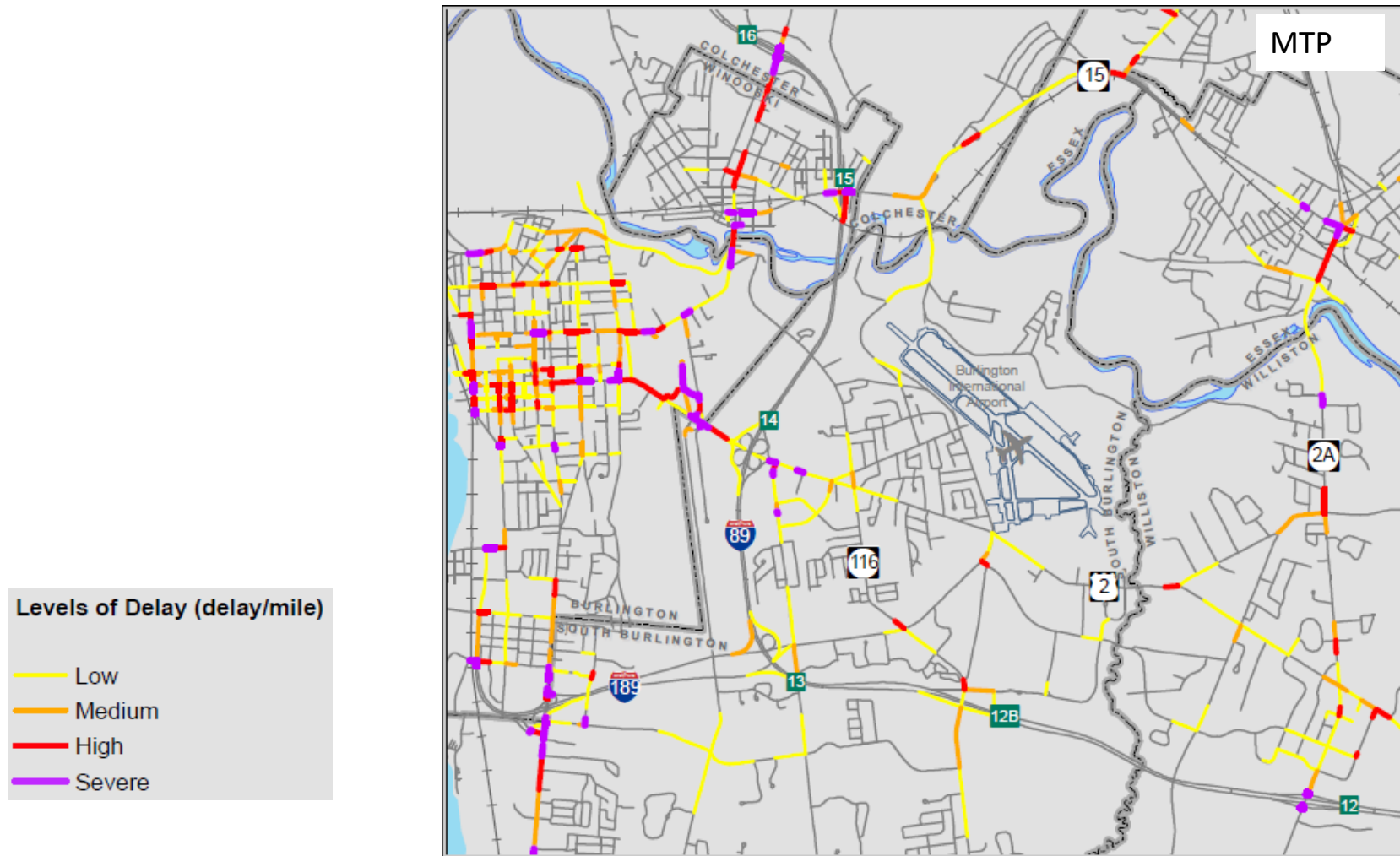


# Roadway Capacity

- Balance possible I-89 widening vs. local road improvements
- Pursue alternative ways to reduce congestion
  - Transit, HOV lane, Connected & Autonomous Vehicles
- Increase funding share for alternative modes



# Roadway Delay

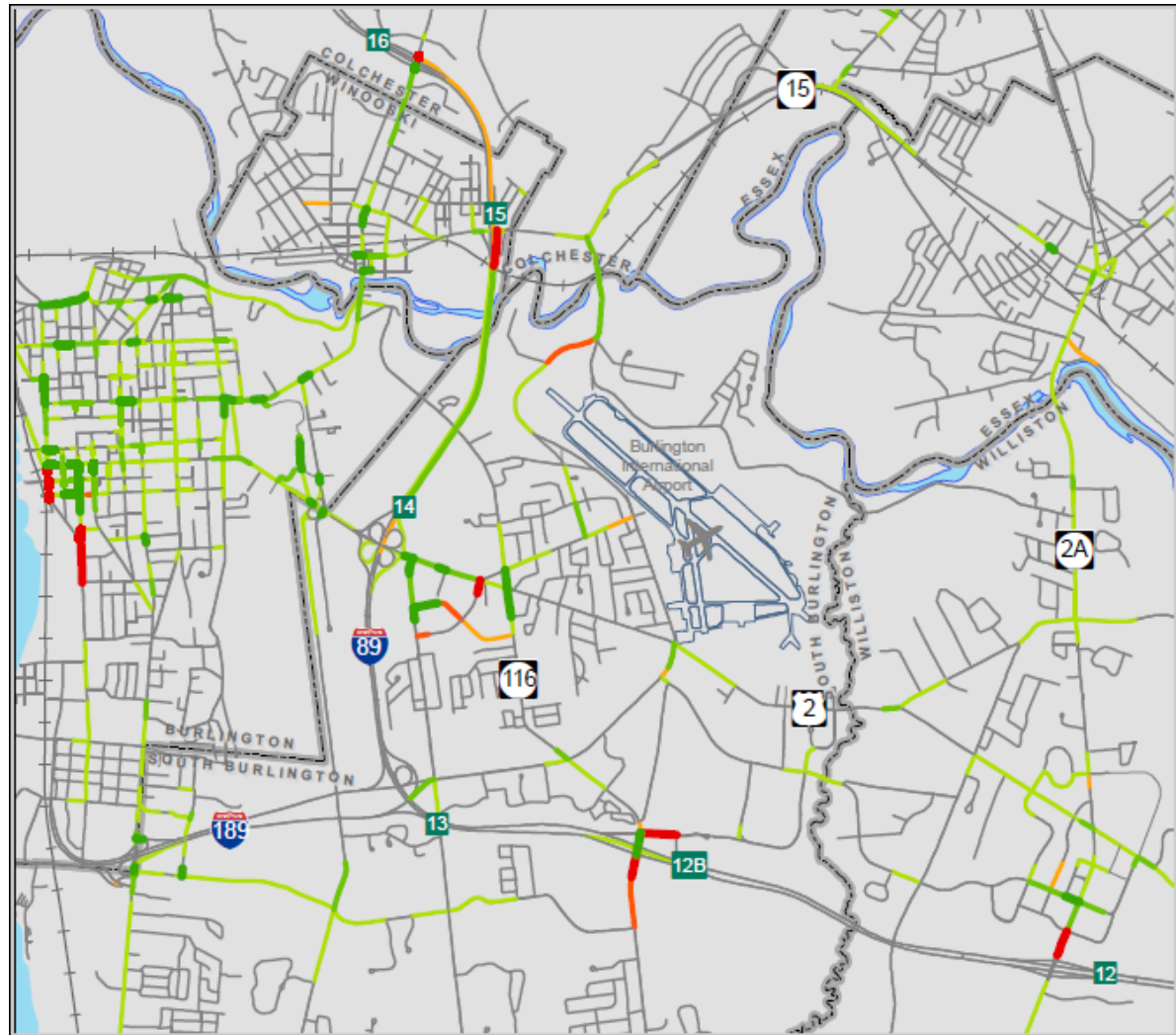




## Delay Changes: 2050 Base to 2050 MTP

Decreases (green) & Increases (red)

- High
- Medium
- Low
- Neutral
- Low
- Medium
- High



## MTP Priorities

- 70% of Funding goes to System Preservation
- Concentrate growth in our Villages and Downtowns
  - 90% of HH growth in areas planned for growth
- Safety (HCL) Improvements
- ITS Investments
- TDM Programs
- Increases in walking/biking
- Capacity expansion when needed

**The strategies strike a balance between:**

-  Reducing congestion
-  Fixing high-crash locations
-  Enhancing walking, biking & transit
-  Increasing livability by investing in areas planned for growth

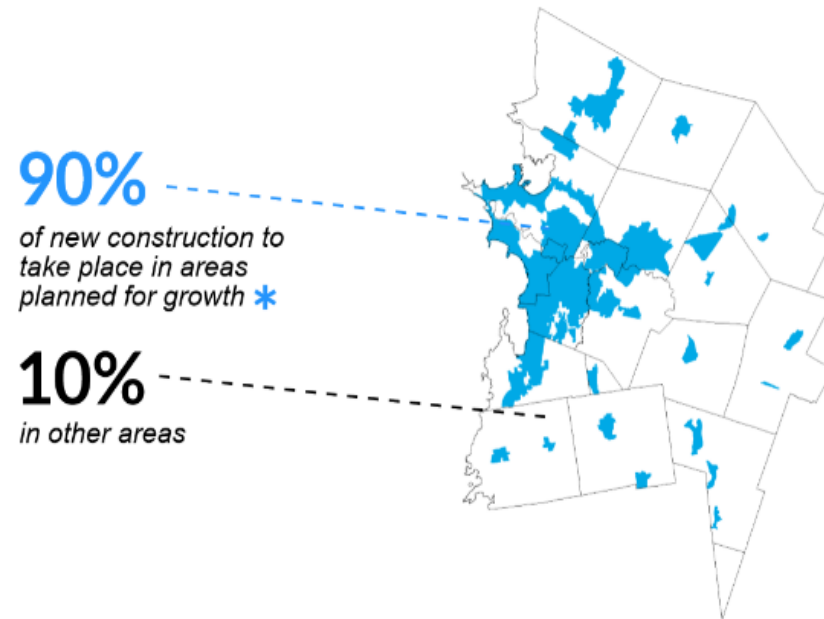
## MTP Priorities (Cont'd)

- Transit enhancements
  - 15 minute headways on all trunk routes (US2, US7, VT15 & North Ave)
  - 20 – 30 min headways on all other routes and improved weekend service
  - New Colchester loop
- Future I-89 Scoping Study
  - I-89 Third Lane between Exits 14 and 15
  - Interchange improvements at Exit 13 **or** Exit 14 **or** Exit 15 **or** New Interchanges at Exit 12B (placeholder) **or** Exit 14N **or** Exit 17N **or** No major interchange improvements



## Summary

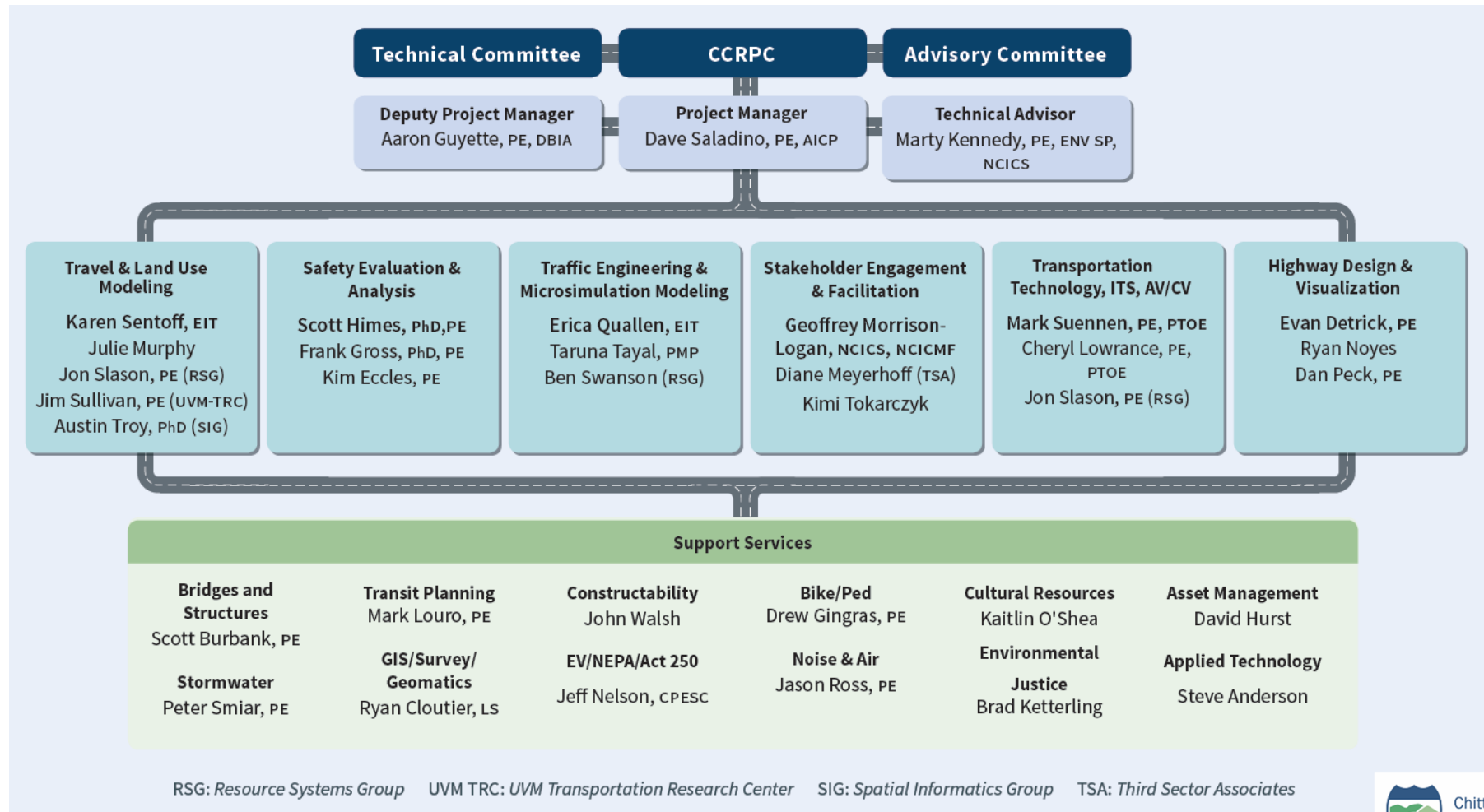
- TDM and concentrating land-use reduces auto travel and increases viability of non-auto modes
  - Benefits: Stronger centers, improve health, mobility to underserved populations
- Roadway improvements mainly address localized congestion and safety issues



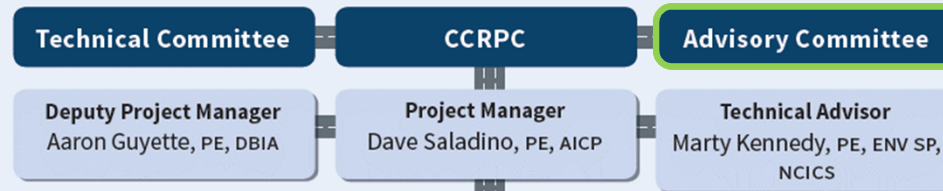
## I-89 Project Overview

- Project Study Area:
  - I-89 through Chittenden County (37 miles & 7 interchanges); full length of I-189; arterials immediately adjacent to the interchanges.
- Draft Project Goal:
  - Develop a comprehensive, multimodal implementation plan that focuses on the I-89 & I-189 corridors through Chittenden County that accommodates anticipated growth through 2050 and best aligns with the vision that will be articulated by a broad and diverse group of stakeholders and the public. This plan will be developed and considered in the context of the broader 2018 ECOS/MTP Plan.

# Project Team



# Advisory Committee Role



**Advisory Committee:** The Advisory Committee will **provide policy guidance and input** on a wide range of topics from study goals and stakeholder engagement strategies to alternatives evaluation and decision-making. This group will function as a body with wide knowledge who can speak on behalf of many communities impacted by this project and will **help in the decision-making process** throughout the project.

## Members:

### Burlington International Airport

- Nic Longo

### Conservation Law Foundation (CLF)

- Sandra Levine

### Chittenden Area Transportation Management Association (CATMA)

- Sandy Thibault

### Federal Highway Administration (FHWA)

- Chris Jolly

### Green Mountain Transit Authority (GMTA)

- Mark Sousa

### Lake Champlain Regional Chamber of Commerce (LCRCC)

- Tom Torti

### Local Motion

- Allegra Williams

### Municipalities

- Bryan Osborne, Colchester
- Michael Burris, Milton
- Josh Arneson, Richmond
- Justin Rabadoux, South Burlington
- Matt Boulanger, Williston
- Jon Raucher, Winooski

### Regional Planning Commissions

- Daniel Currier, CVRPC
- Catherine Dimitruk, NRPC

### Vermont Natural Resource Council (VNRC)

- Kate McCarthy

### VT Agency of Natural Resources (ANR)

- Jen Mojo

### VT Agency of Transportation (VTrans)

- Kevin Marshia
- Joe Segale
- Amy Bell
- Josh Schultz
- Jesse Devlin

# Advisory Committee Operating Procedures

## ■ Review & Discuss Operating Procedures Document

### Operating Procedures

#### For the I-89 2050 Study Advisory Committee for consideration by the Committee

The Advisory Committee will provide policy guidance and input on a wide range of topics from study goals and stakeholder engagement strategies to alternatives evaluation and decision-making. This group will function as a body with wide knowledge who can speak on behalf of many communities impacted by this project and will help in the decision-making process throughout the project.

#### 1. Duties and Responsibilities

- A. Members of the Advisory Committee are expected to: learn about the issues relevant to the project; disseminate this information to the community/organization they represent; share their opinions and those of their community/organization in a timely manner; encourage early and broad community participation; and promote and affirm the outreach process for this effort. It is the responsibility of the committee member to regularly report to the organization or constituency to which s/he represents and to present to the Advisory Committee the views of his or her constituency.
- B. All participants are requested to respectfully listen to the opinions of others in an effort to ensure a constructive discussion and a successful project outcome.
- C. Advisory Committee members will be expected to participate in scheduled public meetings and activities and encourage others to attend and share their opinions at the meeting or by communicating with the Project Team. All Advisory Committee meetings will have a public comment period.
- D. We understand that members of the Committee have many personal and professional commitments aside from this one. However, we ask that members make every possible effort to attend the meetings consistently or send their designated alternate.
- E. The Chittenden County Regional Planning Commission (CCRPC) and its consultants commit to the following responsibilities: to schedule Advisory Committee meetings on a regular basis that will allow the participants to consider issues and offer timely input; to consider and respond to this input and concerns; to provide understandable and accurate data and project information; to provide timely notice of meetings with agendas; to record and distribute accurate summaries of the discussions, and to keep the project website updated.

#### 2. Membership

A. Advisory Committee members include the following organizations:

- |   |  |
|---|--|
| » Burlington International Airport                              | » Local Motion   |
| » Conservation Law Foundation (CLF)                             | » Municipalities along the I-89 Corridor               |
| » Chittenden Area Transportation Management Association (CATMA) | » Adjacent Regional Planning Commissions (NRPC, CVRPC) |
| » Federal Highway Administration (FHWA)                         | » Vermont Natural Resource Council (VNRC)              |
| » Green Mountain Transit Authority (GMT)                        | » VT Agency of Natural Resources (ANR)                 |
| » Lake Champlain Regional Chamber of Commerce (LCRCC)           | » VT Agency of Transportation (VTrans)                 |

- B. The public is welcome to attend the committee meetings as observers. A public comment period will be set aside at each meeting for comments or questions from observers.

#### 3. Project Management and Committee Staffing

Overall project management will be provided by CCRPC staff. Professional analysis and technical assistance will be provided by a consultant team led by VHB. Committee staffing and meeting facilitation will be provided by CCRPC staff and the consultant team. Charlie Baker, CCRPC Executive Director, will serve as the Chair of the Advisory Committee. In Charlie's absence, Eleni Churchill, CCRPC Transportation Program Manager, will serve as Vice-Chair of the committee.

#### 4. Voting

The Advisory Committee will seek to achieve consensus on proposals or alternatives; in the absence of a consensus, each organizational member will have one vote. The outcome of the vote will be by majority rule. Final recommendations will be voted on by the Advisory Committee before being sent formally to the CCRPC and VTrans.

#### 5. Duration

The Advisory Committee will continue to function until a set of final recommendations is determined, anticipated in the fall of 2021.

#### 6. Meetings

- A. The Advisory Committee shall meet approximately 8 times through the duration of the project as determined by the project work and schedule.
- B. All Advisory Committee meetings will be open to the public. Meeting dates, agendas, and notes will be posted on the project's website (<https://envision89.com/>).
- C. The following note will be included on all meeting agendas: In accordance with provisions of the Americans with Disabilities Act (ADA) of 1990, the CCRPC will ensure public meeting sites are accessible to all people. Requests for free interpretive or translation services, assistive devices, or other requested accommodations, should be made to Emma Vaughn, CCRPC Title VI Coordinator, at 802-845-4490 ext. \*21 or [emma.vaughn@ccrpcvt.org](mailto:emma.vaughn@ccrpcvt.org), no later than 3 business days prior to the meeting for which services are requested.

*The CCRPC appreciates the time and effort that individuals commit to this kind of project and thanks you for representing your community/organization and working to enhance the planning process.*



Chittenden County  
I-89 2050 Study

# Technical Committee Role



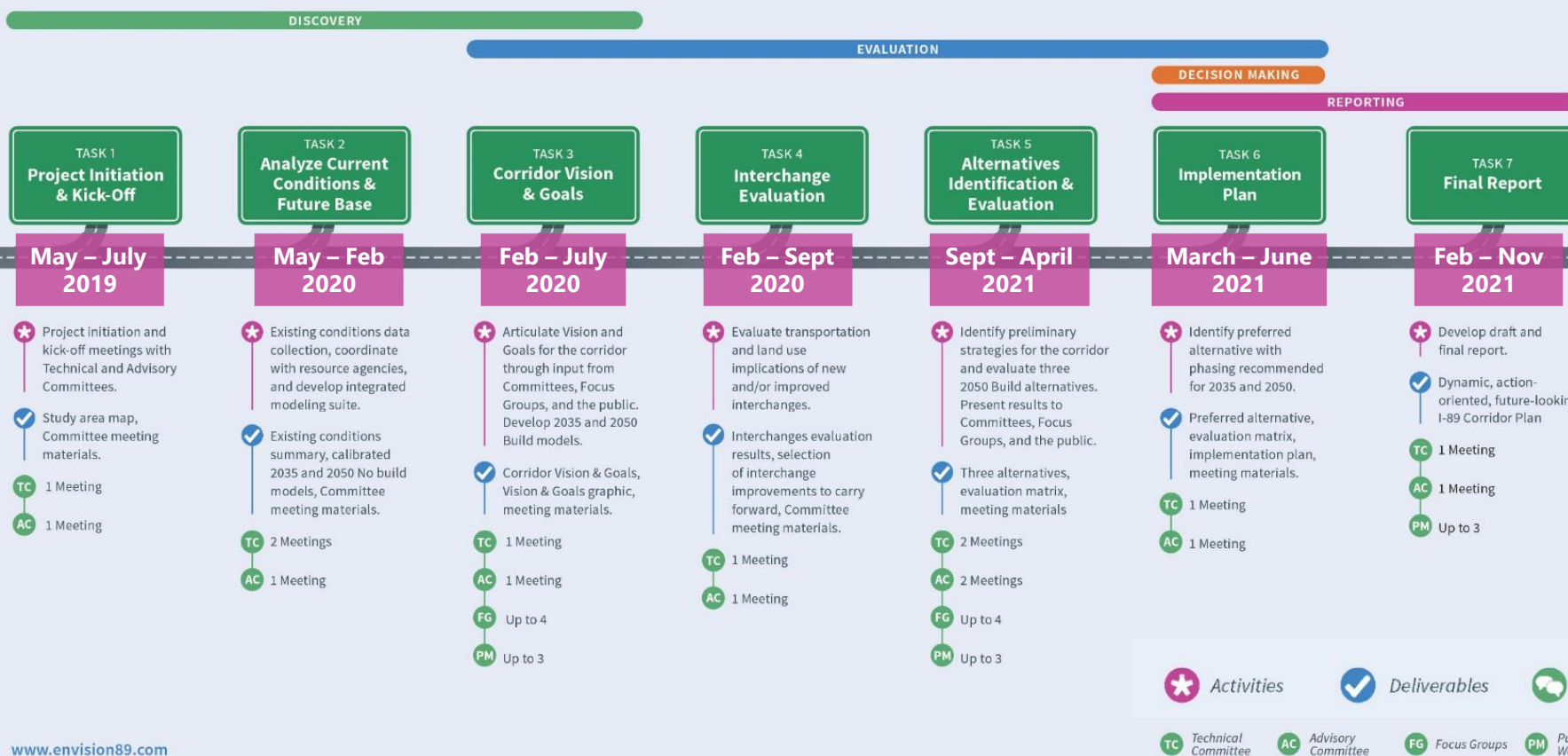
**Technical Committee:** The Technical Committee will focus on the key **technical issues and decisions** that need to be advanced during the course of the study—including study goals, technical design criteria, outcomes from modeling and other evaluations, and review of alternatives and final plan recommendations. This group will function as the body that will ensure **quality from a technical standpoint** throughout the life of the project and assist the project team with **disseminating complex concepts** and technical information to the Project's Advisory Committee.

## Members:

- Joe Segale, PE, VTrans
- Kevin Marshia, PE, VTrans
- Amy Bell, VTrans
- David Blackmore, VTrans
- Ashley Bishop, VTrans
- Christopher Jolly, PE, FHWA
- Justin Rabidoux, City of South Burlington
- Nicole Losch, City of Burlington

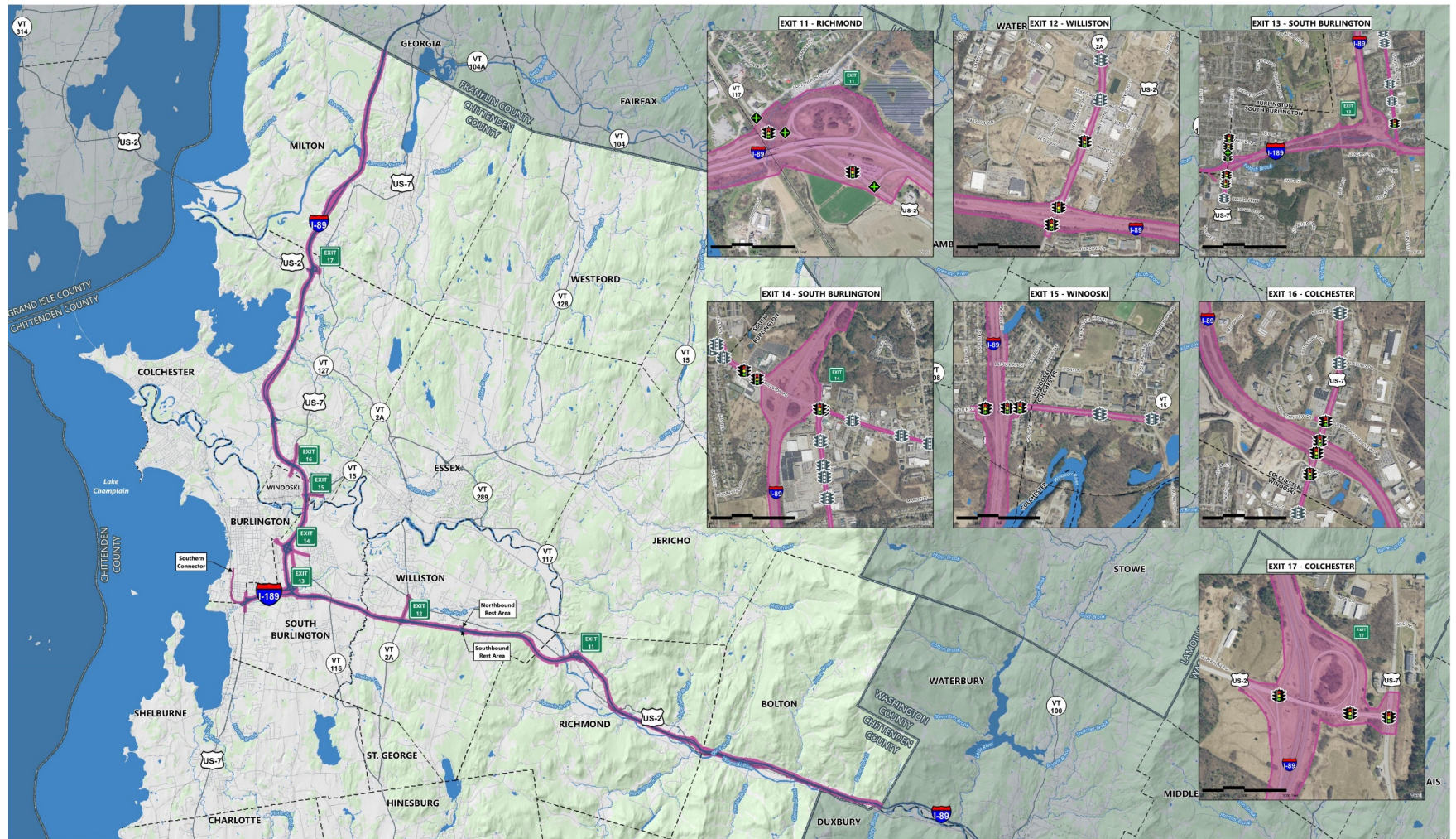
# Chittenden County I-89 2050 Study Project Overview

Our schedule for successfully moving from project kick-off through stakeholder engagement and technical evaluations to develop a comprehensive, forward-looking plan for the I-89 corridor.





## Task 2.0 – Project Study Area





# Task 2.0 – Review Previous Reports

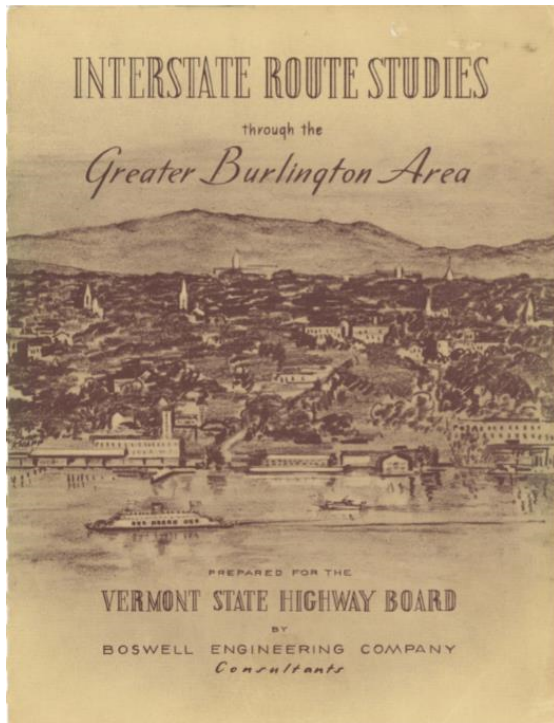
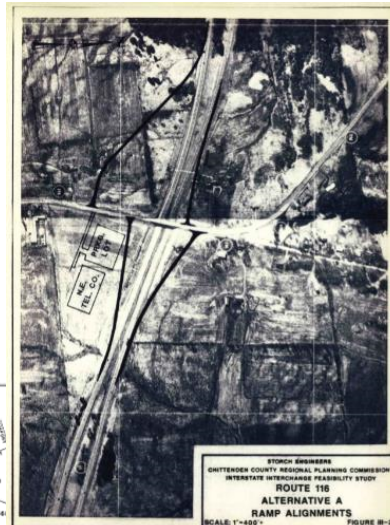
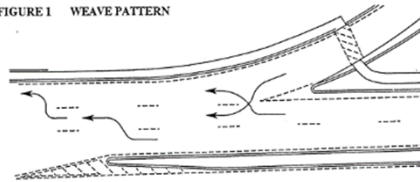


FIGURE 1 WEAVE PATTERN



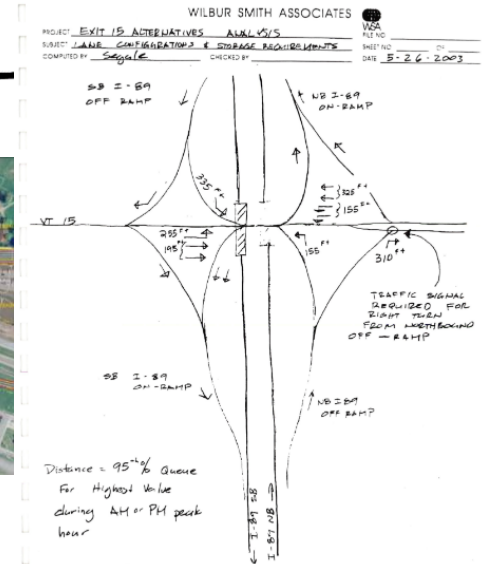
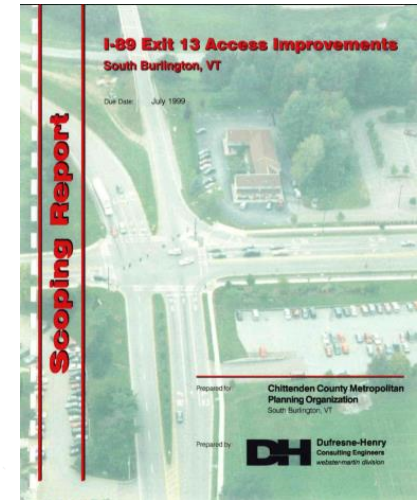
## Chittenden County I-89 Corridor Study

Final Report  
December 31, 1997



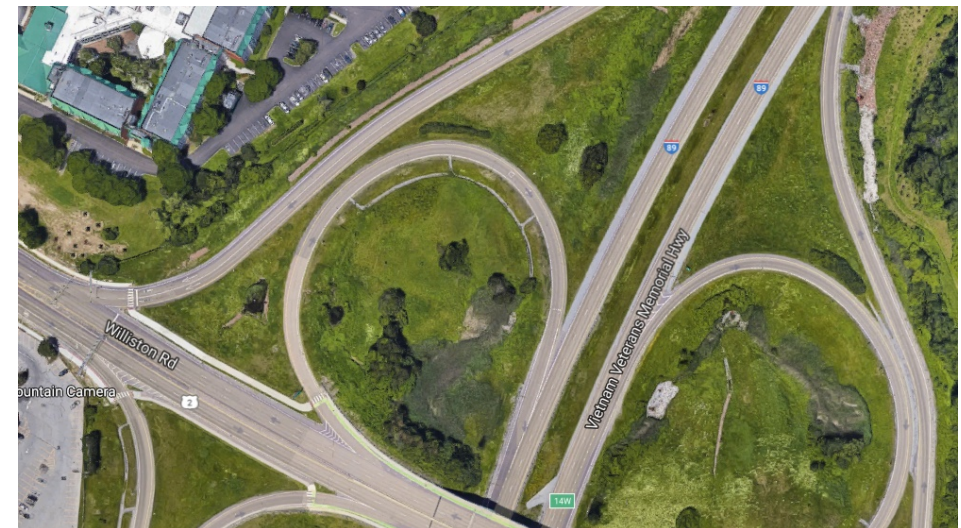
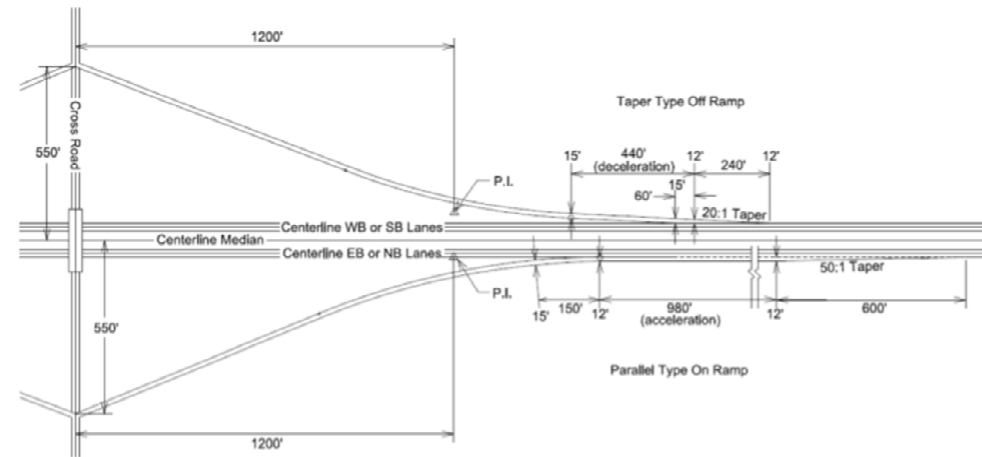
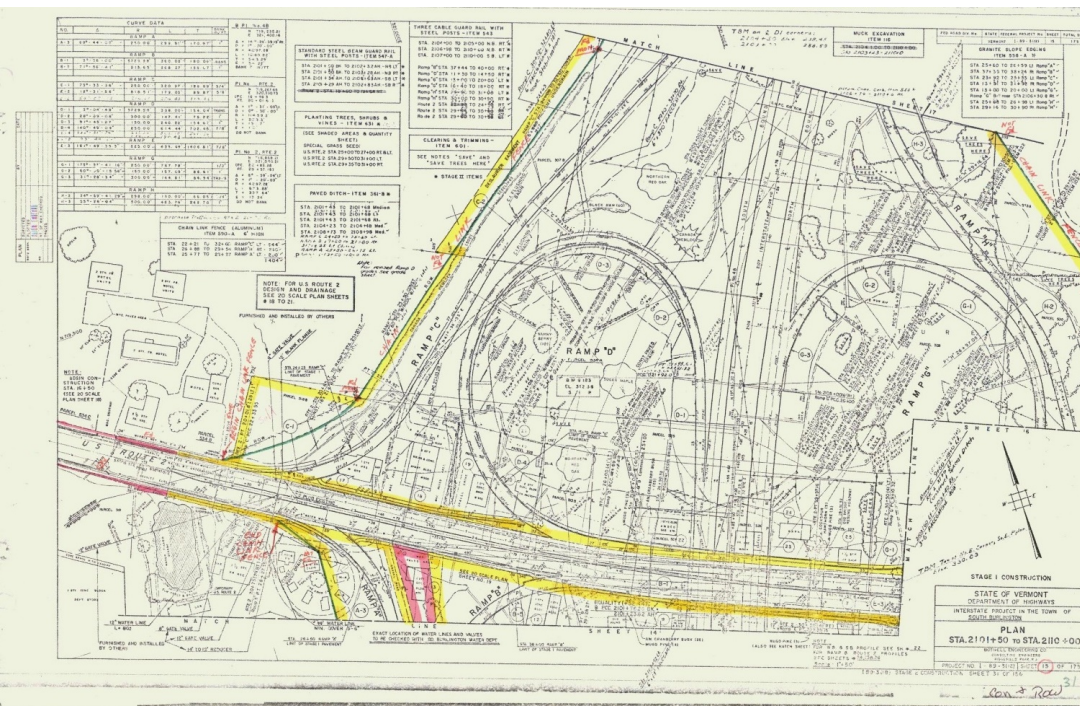
ccmpo

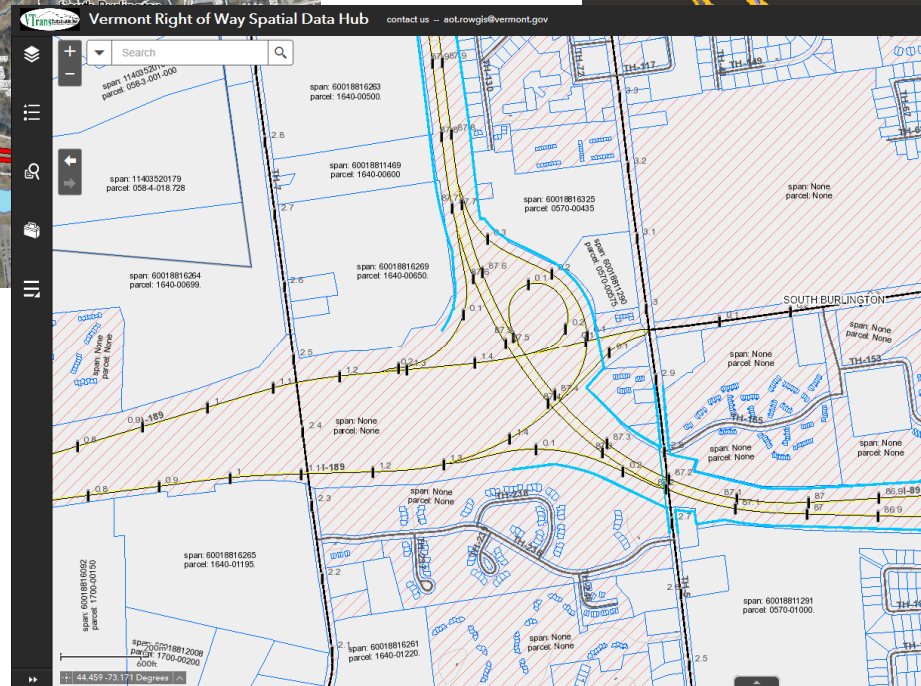
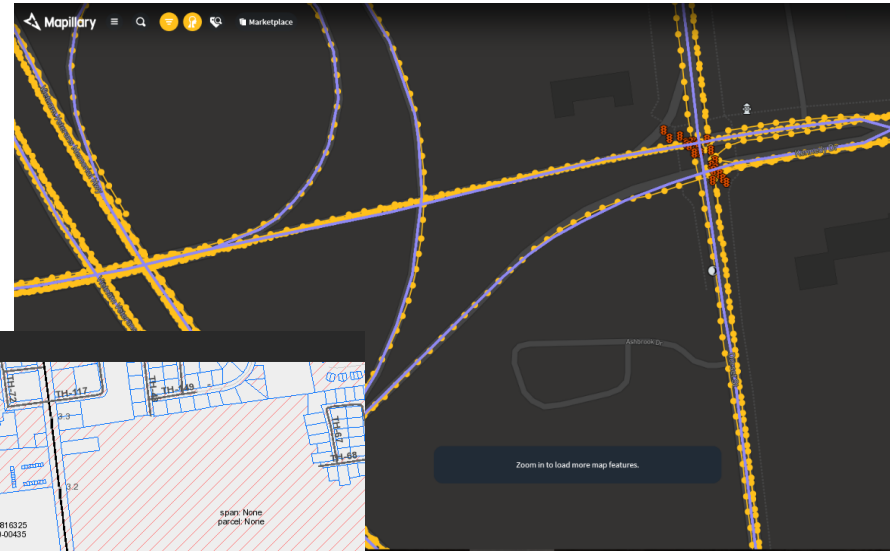
Chittenden County Metropolitan Planning Organization  
100 Dorset Street, Suite 22  
South Burlington, VT 05407-9217  
802-660-4071  
e-mail: ccmpo@together.net





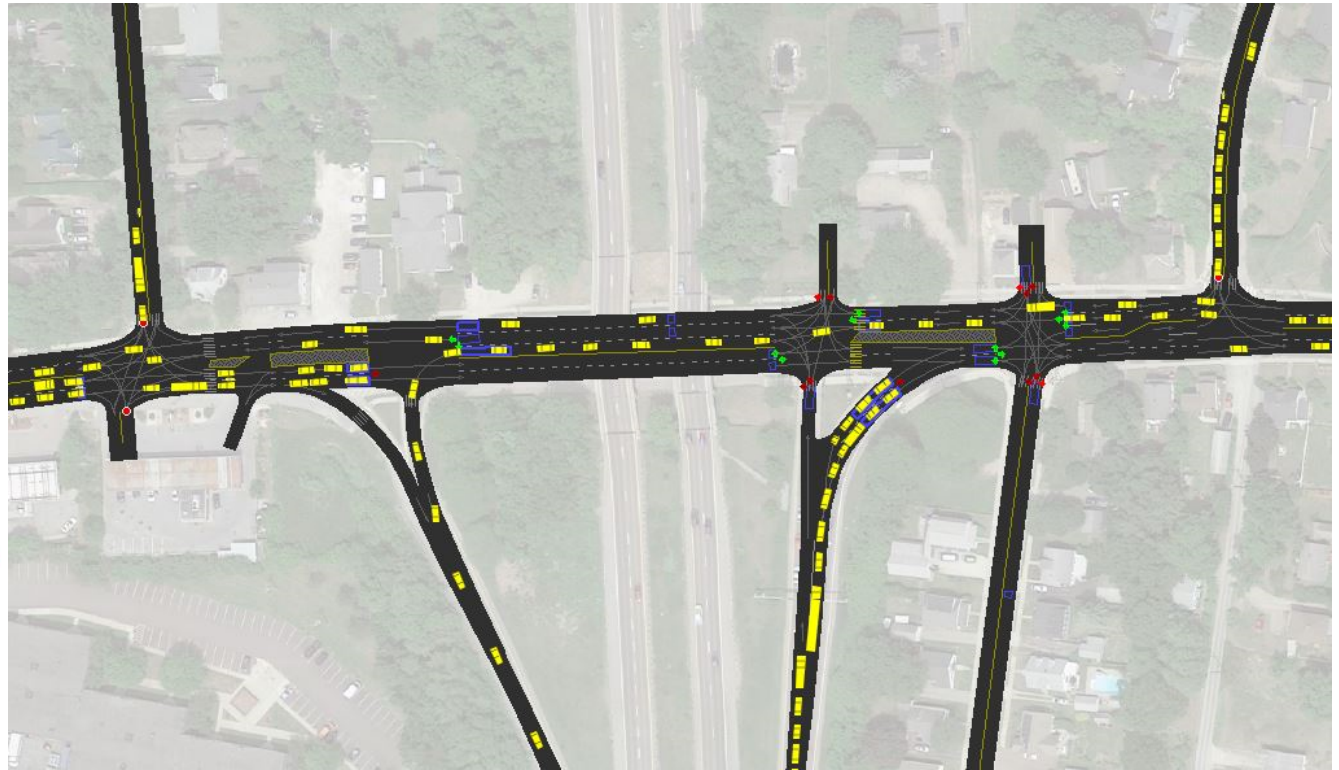
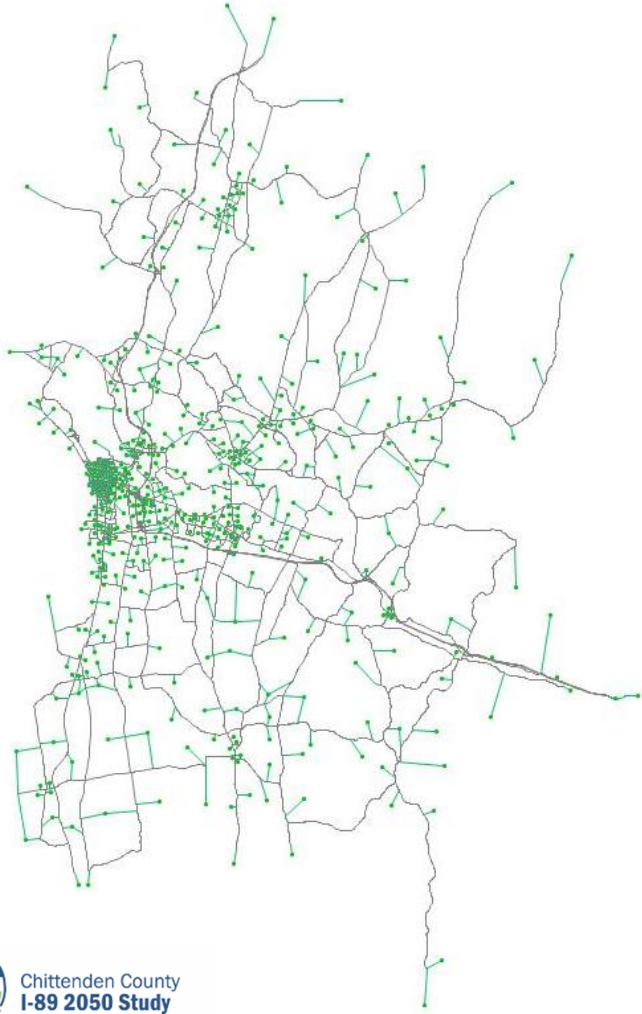
# Task 2.0 – Interchange Geometric Assessment









## Task 2.0 – Build Base Travel Demand and Microsimulation Models



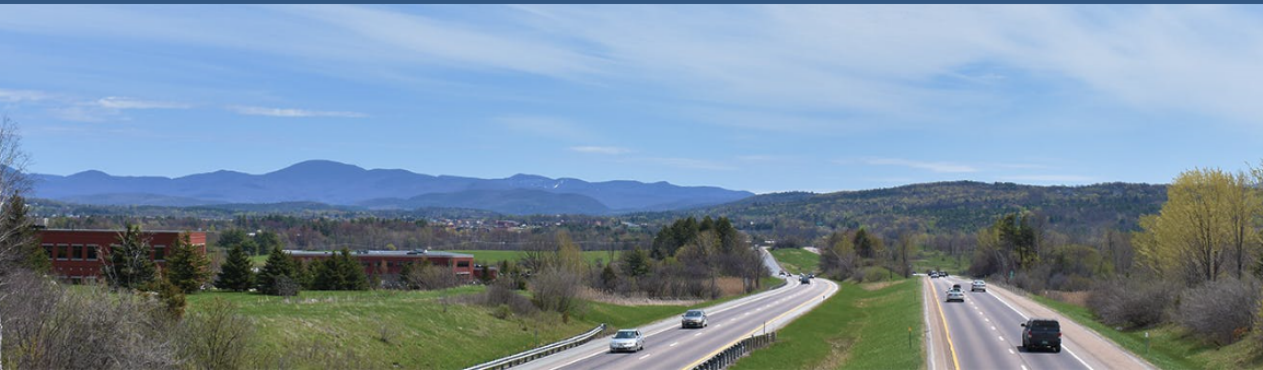
## Task 2.0 - Public Engagement Platform: [www.envision89.com](http://www.envision89.com)




Chittenden County  
I-89 2050 Study

Search 


Home About the Project Sign In | Register






Chittenden County  
I-89 2050 Study

Welcome to your home for the I-89 2050 Study! Thank you for your interest and participation in this project. Visit the tiles below to learn more about the project, and share your ideas and feedback!



About the Project



Get Started

Key Dates

May 13


Kick-Off Meeting

May 31


Example Public Meeting

News List

I-89 2050 Study Kicks-Off This Month!

 May 10 2019

Envision89.com Now Launched!

 May 10 2019

Lifecycle

# Overview of Public Engagement Platform: [www.envision89.com](http://www.envision89.com)

## Controlled environment

Participants cannot engage with each other. Data is stored in the back end and only accessible by admin.



## Mixed environment

Participants can see other participants contributions. However, there is little peer-to-peer interaction. Some data may be visible to the public, other data is just accessible by admin.

Answered Privately | Answered Publicly



Pre Moderated | Post Moderated



Commenting Disabled | Commenting Enabled



## Open environment

Participants can engage with each other. Comments and ideas are visible.



## Surveys

The Surveys tool gives people an opportunity to voice their opinion in a convenient and guided way, which has historically shown higher response rates than other formats.

## Polls

Polls encourage people to give a quick answer on one question, selecting from multiple choice answers. They are able to instantly see the Poll results, peaking their interest and giving you real time insight.

## Questions

Questions is an issues management and communications risk mitigation tool. It is a managed space for your community to ask you questions and for you to respond either publicly or privately.

## Guestbook

Guestbook keeps things simple; people are only able to upload comments, which are moderated to manage what appears publicly. No other interaction is enabled.

## Stories

When we tell or hear a story, neuroscience tells us that we experience things on a higher and more resonant level. Stories helps your community better understand, empathize and relate to others as well as your project goals.

## Places

Places is a simple way to gather community feedback and ideas directly on a map. Participants drop a "pin" in the area of concern, add photos and then fill in a quick survey.

## Ideas

Ideas provides "virtual" post it notes for individuals to add their ideas to a collective board. People like the ideas that inspire them most, helping align your priorities with what matters most to the community.

## Forum

The Forums tool creates a space for discussion, dialogue and debate. People share their experiences with others, ask questions and have conversations in a safe and interactive environment.



## Next Steps

- Advisory Committee Comments on Project Goal and Scope – End of July
- Project team will finish compiling existing conditions data; meet with resource and other state agencies; complete integrated modeling suite
- Technical Committee Meeting #2 – September/October
  - Review transportation models
  - Review and identify performance metrics to be used for evaluation
- Project team will evaluate current and future base conditions and performance
  - 2015 (existing), 2035 (existing + TIP), 2050 (existing + TIP)
- Advisory Committee Meeting #2 – Early 2020
  - Review results of Existing and Future Base Year Analyses
  - Brainstorm Project Vision and Goals
  - Prepare for first round of Focus Groups & Public Meetings